



conscious
WATER CONSUMPTION
AND CO² EMISSIONS
LIFE CYCLE ASSESMENT



recycled
CERTIFIED
RECYCLED
POLYESTER



organic
CERTIFIED
ORGANIC
COTTON

Printer prime



Certified
Organic
Cotton



Certified
Recycled
Polyester



Industrial
Washing



Washable
60°C



Tumble
Drying



Washing Chip
Pocket



Compostable
Package



LCA
(Life Cycle
Assesment)



Wide Size
Range



Oeko-Tex 100



printer prime

We're here for the long run.

We are proud to present our new two-color collection: Printer Prime.

During the development of Printer Prime, the top priority was to develop a more sustainable collection with focus on reduced negative environmental impact. All products are made of organic cotton and/or recycled polyester from post-consumer PET bottles.

Printer Prime consists of modern garments that can be worn in almost all industries. The materials are chosen to withstand hard grips and last a long time.





Recycled polyester

For the Printer Prime garments, we use recycled polyester.



Organic Cotton

The cotton in Printer Prime is organic cotton.



Biobased & Compostable

The packaging is made of biobased & compostable PLA-material.





Recycled Materials

1 jacket = 55 recycled bottles*



During the development of Printer Prime, the top priority was to develop a more sustainable collection with focus on saving water, reduce carbon dioxide emissions and enable a long product lifespan. We used a cradle to gate LCA (Life Cycle Analysis) framework to calculate carbon dioxide emissions and water saving to ensure that the production have less negative environmental impact than comparable garment production. Each garment is made of organic cotton and/or recycled polyester from post-consumer PET bottles. Organic cotton is cultivated without any chemical pesticides or artificial fertilizers, which are harmful to wildlife and soils and also for those who work with it. Recycled polyester gives PET bottles new life, which reduces the dependence on petroleum at the raw material for fabric needs. Also the packaging is developed with sustainability in mind - the paper is made of recycled paper and our bags are made of PLA, a biobased and compostable material.

* The amount of recycled polyester in a Prime softshell jacket (men size L) is calculated to correspond to the amount of polyester in 55 PET bottles (550 ml). Data for other Printer Prime products available on printeractivewear.com



REMOVABLE HOOD

ELASTIC DRAWSTRING

PRACTICAL CHEST POCKET

DUAL COLOR DESIGN

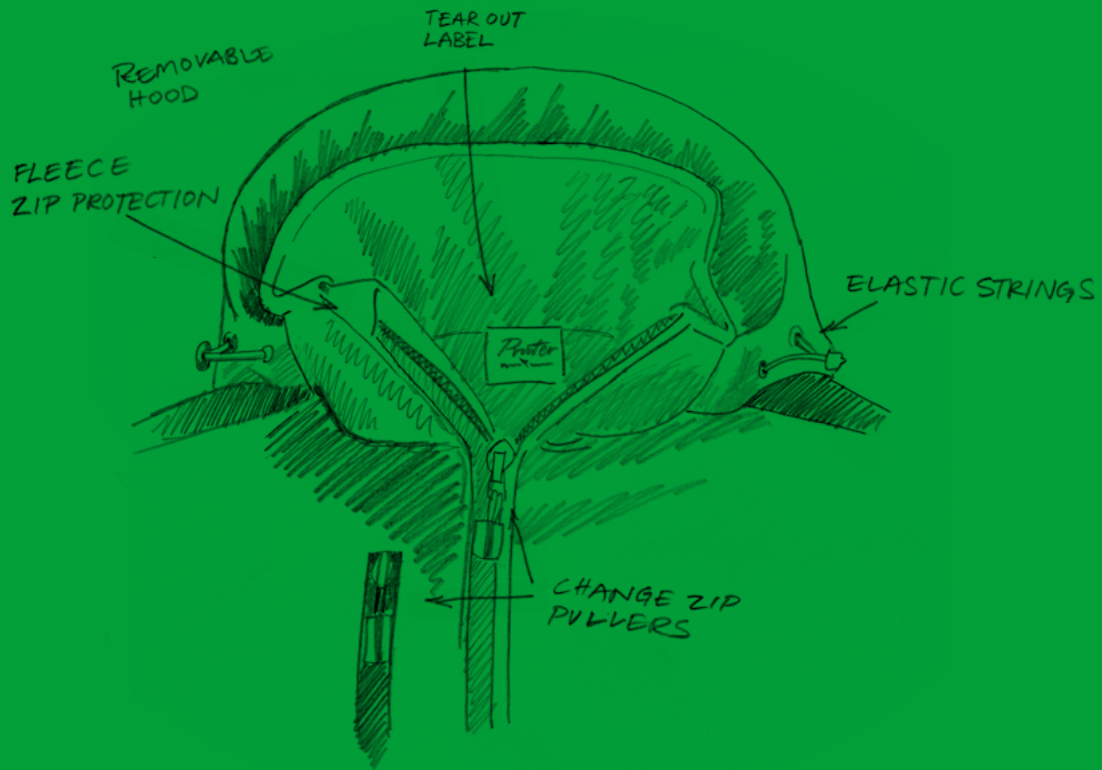
STRETCH

COMFORTABLE PRECURVED SLEEVES

WASHING CHIP POCKET

VELCRO ADJUSTED SLEEVES

ELASTIC DRAWSTRING



Smarter Construction

In the Printer Prime collection's durable garments, we have solid materials that doesn't come apart easily. This means that the products last as long as possible. The garment's lifespan is the single biggest factor in preventing waste and reducing its environmental impact. The most important thing we can do as conscious consumers to curb the negative environmental impact that a linear industry entails, is to buy fewer garments of better quality. With Printer Prime, you choose quality garments with a long life.

The clothes can be washed at 60 ° C, so that the garments are not only cleaned of stains but also become hygienically clean. Prime collection can even be tumble dried at low temperature (max. 60 ° C) and has been tested for industrial washing according to EN ISO 15797.

We have deliberately designed our line in a modern way so that it can be worn in most professional roles. A collection that will suit everyone. Are the colleagues big or a little smaller? Our collection is inclusive: from XS to 2XL for women and S to 5XL for men. Printer Prime fits everyone.

*four-layer
rib at neck*

*tear out
necklabel*

*reinforced
shoulder seams*

*certified
recycled polyester*

*compostable
packaging*



*excellent
durability*

*certified
organic cotton*



CERTIFIED
ORGANIC COTTON



CERTIFIED
RECYCLED POLYESTER



WASHING CHIP
POCKET



WIDE SIZE RANGE



BIOBASED,
COMPOSTABLE
PLA-BAG



*female
style*

prime t

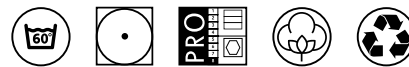


EMISSIONS AND WATER USAGE



The calculated LCA Cradle to Gate emissions of this product (Men size M) is eq. of 1.58 kg CO²e (approx. 10 % less than average emission data for comparable product) and 0.12 m³ of water (approx. 70 % less than average emission data for comparable product). Further documentation available at printeractivewear.com

OEKO-TEX[®]
ADVANCED LEVEL
STANDARD 100
BY HANES



PRIME T 2264030
PRIME T LADY 2264031

Modern fit, bicolour T-shirt. Elastane in neck rib. Neck rib with four layers for better stability. Tear-out neck label and separate woven size label. In the inner left side seam a pocket is provided for sewing in a laundry chip. The fabric has been ring-spun and treated with an enzyme wash, which pre-shrinks the material and gives it a soft feeling. Oeko-Tex 100 certified

50% CERTIFIED ORGANIC COTTON,
50% CERTIFIED RECYCLED POLYESTER,
180 G/M²

2264030 XS-5XL
 2264031 XS-3XL

certified recycled polyester

tear out necklabel

compostable packaging

certified organic cotton



excellent durability

no buttons on female



female style



CERTIFIED ORGANIC COTTON



CERTIFIED RECYCLED POLYESTER



WASHING CHIP POCKET



WIDE SIZE RANGE

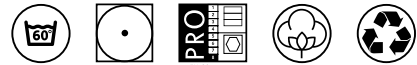


BIOBASED, COMPOSTABLE PLA-BAG

prime polo



OEKO-TEX
STANDARD 100
SE 14-218
www.oeko-tex.com



PRIME POLO 2265024
PRIME POLO LADY 2265025

Bicolour piqué with 3 buttons (shorter placket and no buttons on female) and contrast tipping in the collar. Contrast tape in de neck and on the side slits. Tear-out neck label and separate woven size label. In the inner left side seam a pocket is provided for sewing in a laundry chip. Tested for industrial washing according to ISO 15797. Oeko-Tex 100 certified.

50% CERTIFIED ORGANIC COTTON,
50% CERTIFIED RECYCLED POLYESTER,
200 G/M²

2265024 S-5XL
2265025 XS-XXL

EMISSIONS AND WATER USAGE



The calculated LCA Cradle to Gate emissions of this product (Men size M) is eq. of 2.5 kg CO₂e (approx. 22 % less than average emission data for comparable product) and 0.23 m³ of water (approx. 64 % less than average emission data for comparable product). Further documentation available at printeractivewear.com

certified organic cotton

compostable packaging



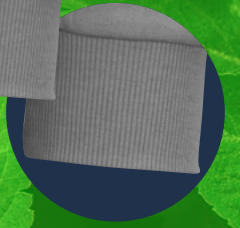
tear out necklabel

certified recycled polyester



Excellent durability

2x2 rib



CERTIFIED ORGANIC COTTON



CERTIFIED RECYCLED POLYESTER



WASHING CHIP POCKET



WIDE SIZE RANGE



BIOBASED, COMPOSTABLE PLA-BAG

prime polosweater

wisex garment



OEKO-TEX®
MADE IN THE UK
STANDARD 100
BY 14-218 Sumera NV

09/08/09/10



PRIME POLOSWEATER 2262060

Bicolour sweatshirt with polo collar with contrast tipping. Contrast tape in the neck. 2x2 rib ending at sleeves and bottom hem. Tear-out neck label and separate woven size label. In the inner left side seam a pocket is provided for sewing in a laundry chip. Tested for industrial washing according to ISO 15797. Oeko-Tex 100 certified.

**50% CERTIFIED ORGANIC COTTON,
 50% CERTIFIED RECYCLED POLYESTER,
 280 G/M²**

2262060 XS-5XL

EMISSIONS AND WATER USAGE



The calculated LCA Cradle to Gate emissions of this product (Men size M) is eq. of 3.63 kg CO²e (approx. 24 % less than average emission data for comparable product) and 0.32 m³ of water (approx. 52 % less than average emission data for comparable product). Further documentation available at printeractivewear.com

*tear out
necklabel*

*compostable
packaging*

*certified
organic
cotton*



*replaceable
zip pullers*

*certified
recycled
polyester*



*Excellent
durability*



CERTIFIED ORGANIC COTTON



CERTIFIED RECYCLED POLYESTER



WASHING CHIP POCKET



WIDE SIZE RANGE



BIOBASED,
COMPOSTABLE
PLA-BAG

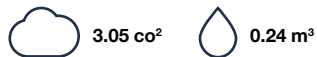
*prime
sweatshirt
jacket*



*female
style*



EMISSIONS AND WATER USAGE



The calculated LCA Cradle to Gate emissions of this product (Men size M) is eq. of 3.05 kg CO₂e (approx. 28 % less than average emission data for comparable product) and 0.24 m³ of water (approx. 59 % less than average emission data for comparable product). Further documentation available at printeractivewear.com

OEKO-TEX®
STANDARD 100
BY HANAU



**PRIME SWEATSHIRT JKT 2262061
PRIME SWEATSHIRT JKT LADY 2262062**

Bicolour sweatshirt jacket with contrast zipper in centre front and on front pockets. Contrast tape in neck. 2x2 rib ending at sleeves and bottom hem. Tear-out neck label and separate woven size label. In the inner left side seam a pocket is provided for sewing in a laundry chip. Zipper pullers in contrast colour. Replacement zipper pullers sold separately. Tested for industrial washing according to ISO 15797. Oeko-Tex 100 certified.

**50% CERTIFIED ORGANIC COTTON,
50% CERTIFIED RECYCLED POLYESTER,
280 G/M²**

2262061 XS-5XL
2262062 XS-XXL

recycled polyester

tear out neck label

compostable packaging

excellent durability

elastic drawstrings
velcrostraps @ sleeves

replaceable zip pullers

precurved sleeves

waterproof material



female style



CERTIFIED RECYCLED POLYESTER



WASHING CHIP POCKET



WIDE SIZE RANGE



BIOBASED, COMPOSTABLE PLA-BAG

prime softshell



OEKO-TEX®
 STANDARD 100
 SE 14-218
 www.oeko-tex.com



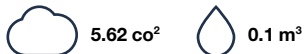
PRIME SOFTSHELL 2261065
PRIME SOFTSHELL LADY 2261066

Bicolour softshell jacket with detachable hood. Contrast zipper in centre front and on front pockets. Adjustable Velcro-straps at bottom sleeves and elastic cord at the hood and bottom seam. Tear-out neck label and separate woven size label. In the inner left side seam a pocket is provided for sewing in a laundry chip. Zipper pullers in contrast colour. Replacement zipper pullers sold separately. Oeko-Tex 100 certified.

SHELL FABRIC: 100% CERTIFIED RECYCLED POLYESTER, 280 G/M², BONDED WITH 100% CERTIFIED RECYCLED POLYESTER FLEECE, WP 3000/ MVP 3000.
LINING (SLEEVES): 100% CERTIFIED RECYCLED POLYESTER

2261065 S-5XL
 2261066 XS-XXL

EMISSIONS AND WATER USAGE



The calculated LCA Cradle to Gate emissions of this product (Men size M) is eq. of 5.62 kg CO²e (approx. 17 % less than average emission data for comparable product) and 0.1 m³ of water (approx. 16% less than average emission data for comparable product). Further documentation available at printeractivewear.com

Smarter Materials

recycled
polyester

cotton/polyester
blends

organic
cotton

easy
handling



fast dry

longer
lifespan

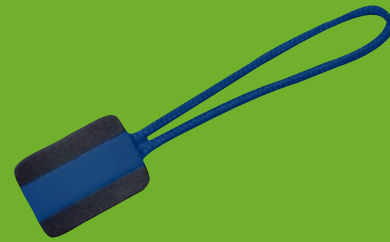
less shrinkage

excellent
color stability

less wrinkling

form stability

high performance
during activities



ZIP PULLER 2269000

Complete the look with zip pullers in your colours. Comes in sets of 4 zip pullers.

TPU
8 X 50 MM

What is Printer Prime?



CERTIFIED ORGANIC COTTON

Our cotton is organically grown and is traceable back to the source. It enables transparent, consistent and comprehensive independent evaluation and verification of the content of organic material on products.



CERTIFIED RECYCLED POLYESTER

The polyester used in the garments comes from certified recycled materials, controlled via an international, voluntary product standard.



OEKO-TEX

Oeko-Tex 100 is one of the most well-known labels for textiles that have been tested for harmful substances. It stands for customer trust and high product safety. When a textile product bears OEKO-TEX, standard 100 label, you can be sure that every part of this article, ie. every thread, button and other accessory, has been tested for harmful substances and that the article is therefore environmentally harmful.



EN ISO 15797

EN ISO 15797 specifies test procedures for evaluating workwear intended for industrial laundry. The tested products fall under the above ISO procedure. In accordance with this standard, they retain their fit, are color-fast and are made of materials that shrink moderately, even with repeated washing.



60° C INDUSTRIAL WASH

The Printer Prime garments are tested to withstand industrial washing up to 60° C. In addition, there is a pocket inside for placement of so-called washing chips for easier handling. The garments can also be tumble dried at up to 60° C.



WASHING CHIP POCKET

All items from our Prime collection are equipped with a washing chip pocket in the left side seam. With simplified handling and traceability as a result.



DEGRADABLE PACKAGING

Our Printer Prime garments are packed in a bio-based, compostable PLA-bag. It is certified by TUV Austria, which guarantees the compostability of the packaging (and that it is made of compostable material). The ink on the polybag is water-based to minimize chemical contamination.



INFORMATION

Via printeractivewear.com (QR code above) you can find more information about CSR and the sustainability of the Printer Prime collection, including the ecological footprint.



LIFE CYCLE ASSESMENT

During the development of Printer Prime, we used a cradle to gate LCA framework to calculate carbon dioxide emissions and water saving to ensure that the production have less negative environmental impact than comparable garment production.



MANY SIZES

Printer Prime offers a wide range of sizes. From XS to 2XL in women and for men S all the way up to 5XL. Our Unisex model is available from XS to 5XL. Everything for everyone.

*bicolored organic cotton smarter
recycled polyester stronger
conscious*

PRIME POLO 2265024
PRIME POLO LADY 2265025

☁️ 2.5 co²e 💧 0.23 m³

PRIME POLOSWEATER 2262060

☁️ 3.63 co²e 💧 0.32 m³

PRIME SWEATSHIRT JKT 2262061
PRIME SWEATSHIRT JKT LADY 2262062

☁️ 3.05 co²e 💧 0.24 m³

PRIME T 2264030
PRIME T LADY 2264031

☁️ 1.58 co²e 💧 0.12 m³

PRIME SOFTSHELL 2261065
PRIME SOFTSHELL LADY 2261066

☁️ 5.62 co²e 💧 0.1 m³



Certified Organic Cotton



Certified Recycled Polyester



Industrial Washing



Washable 60°C



Tumble Drying



Washing Chip Pocket



Compostable Package



LCA (Life Cycle Assessment)



Wide Size Range



OEKO-TEX®
CONFIRMED SAFE TEXTILES
STANDARD 100
SE 14-218 Swerea IVF

Oeko-Tex 100

printer prime