



CATALOG NUMBER

2111034

CATEGORY

JACKETS

CATEGORY

MEN'S

DESCRIPTION:

City coat with hood. Adjustable with cord string at waist (on the inside) and at bottom hem. Black dull metal cord puller at btm hem. Leather-like 2-hole stoppers at waist. Zip puller at C.F in same quality. Fully cotton lined (sleeves in nylon). C6 water repellent finish. Chest pockets with dull black metal zippers. Same type of metal zipper at C.F with buttoned windshield. Wide welted pockets with zippers at front. Inner pocket with zip. With C6 coating applied to a surface, it increases the liquid contact angle of the garment. This "suspends" the liquids, forming them into round droplets. The round shape limits the amount of surface area the droplet comes in contact with, allowing the droplet to bead and roll off the surface easily.

// SHELL FABRIC; 52% COTTON, 45% NYLON, 3% SPANDEX (SANDWICH CONSTRUCTION). BODY LINING; 100% COTTON, POPLIN SLEEVE LINING; 100% NYLON // 600 NAVY, 900 BLACK / S-3XL

AVAILABLE COLORS



BLACK

PARAMETERS:



52% Cotton 45%
Nylon 3% Spandex



C6 environmental
taped seams water
repellent finish



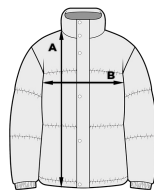
Stretch material

PACKING:  10  1

MARKING METHOD

Transfer

Patches



SIZE	S	M	L	XL	XXL	3XL
A/B	86/54,5	88/57,5	90/61,5	92/65,5	94/69,5	96/73,5

Sizes in cm